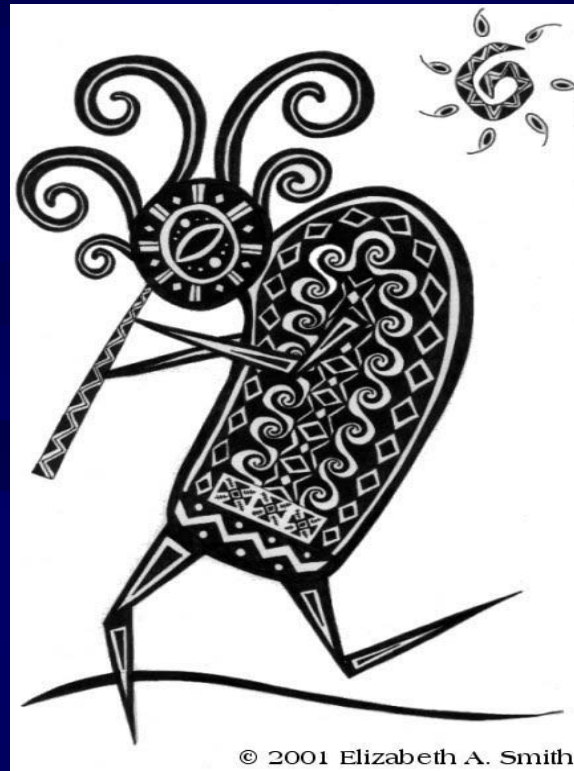
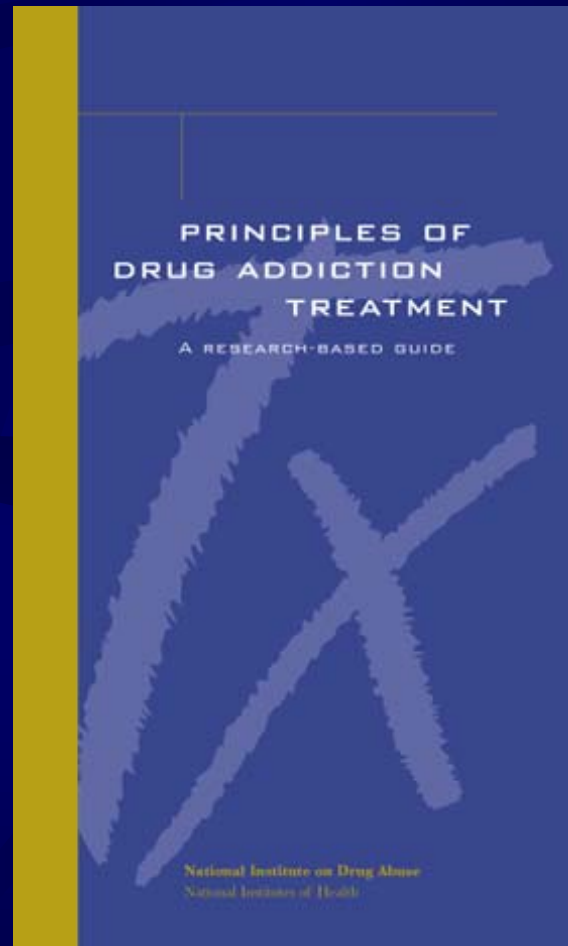


BAMHS' Kokopelli Program



Intensive Outpatient Services (IOP)

NIDA's Principles of Drug Addiction Treatment



Outpatient Treatment Recommendations: Empirically-Supported

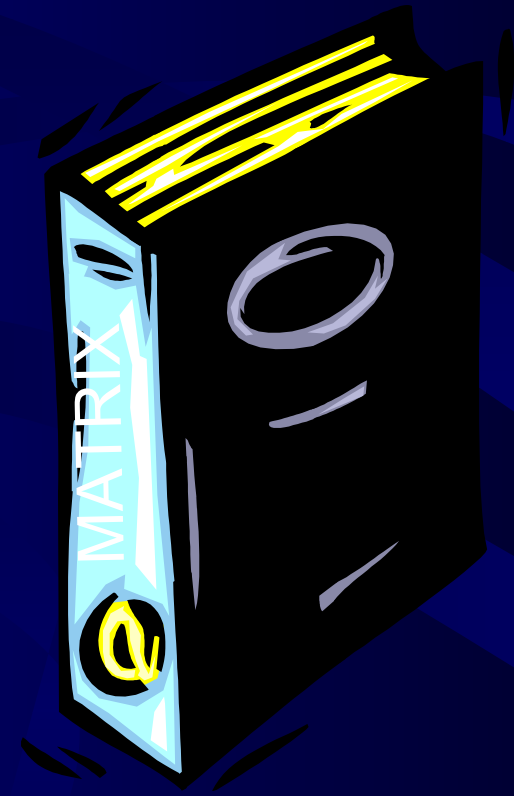
- Multiple Weekly Sessions for at least 90-120 days
- 3 visits per week minimum, recommended.
- Family involvement important
- 12-step facilitation and participation valuable
- Urinalysis and breath alcohol testing needed
- Medications of value with some patients

The Matrix Model

- Formally evaluated for over 15 years.
- Tested on over 8,000 individuals, including Hispanics and in rural communities.
- Research results show significant gains over “treatment as usual”, including attending more sessions, staying longer in treatment, more drug-free urine samples, and longer periods of abstinence.
- Gains have been documented for up to two years.

Treatment Components of the Matrix Model

- Individual Sessions
- Early Recovery Groups
- Relapse Prevention Groups
- Family Education Group
- 12-Step Meetings
- Social Support Groups
- Relapse Analysis
- Urine Testing

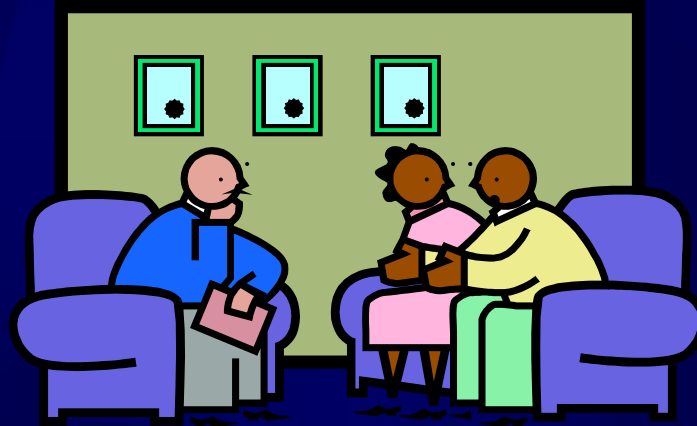


Elements of the Matrix Model



- Engagement & Retention
- Structure
- Information
- Relapse Prevention
- Family Involvement
- Self Help Involvement
- Urinalysis & Breath Testing

Matrix Model Stages of Recovery



Stages of Outpatient Treatment

- Stage I: *Engaging* and achieving abstinence
- Stage II: *Learning* recovery skills and relapse prevention tools
- Stage III: *Maintaining* recovery, building a new life

Program Overview

Duration	Required Components () = weekly contact hrs	Optional Components
<p>Weeks 1-4</p> <p>Min. 9 hrs. per week.</p>	<ul style="list-style-type: none"> • Early Recovery Skills (2 hrs) • Relapse Prevention (3 hrs) • Family Education Group (1.5 hr.) • Urine testing and breath-alcohol testing conducted weekly 	<ul style="list-style-type: none"> • Freedom From DV Group (1.5 hrs) • Intensive Case Mgmt (3 hrs) • Parenting Group – if parent has custody of minor children (1.5 to 2 hrs) • Individ./Conjoint Counseling (1 hr) • AA/Peer Support (1 hr)
<p>Weeks 5-12</p> <p>Min. 9 hrs. per week.</p>	<ul style="list-style-type: none"> • Relapse Prevention (3 hrs) • Family Education Group (1.5 hrs) • Urine testing and breath-alcohol testing conducted weekly 	<ul style="list-style-type: none"> • Individ./Conjoint Counseling (1 hr) • Freedom From DV Group (1.5 hrs) • Intensive Case Mgmt (3 hrs) • Parenting Group (1.5 to 2 hrs) • AA/Peer Support (1 hr)
<p>13-16 weeks</p> <p>Min. 9hrs. per week.</p>	<ul style="list-style-type: none"> • Relapse Prevention (3.0 hrs) • Social Support (1.5) • Urine testing and breath-alcohol testing conducted weekly 	<ul style="list-style-type: none"> • Individ./Conjoint Counseling (1 hr) • Life Skills • GED/Continuing Education • Freedom From DV Group (1.5 hrs) • Mentor/Sponsor Program (1 hr) • AA/Peer Support (1 hr)
<p>Weeks 17-52</p> <p>Min. 1.5 hrs. per week.</p>	<ul style="list-style-type: none"> • Social Support (1.5) 	<ul style="list-style-type: none"> • Individ./Conjoint Counseling (1 hr) • Life Skills • GED/Continuing Education • Freedom From DV Group (1.5 hrs) • Mentor/Sponsor Program (1 hr) • AA/Peer Support (1 hr)

Sample Schedule

Time	Monday	Tuesday	Wednesday	Thursday	Friday
9:30AM-11:00AM		Early Recovery Skills (Weeks 1-4)		Early Recovery Skills (Weeks 1-4)	
11:00AM-12:00PM	New Client Orientation (Initial Week)				
1:00PM – 1:30PM					
1:30PM-3:00PM	Relapse Prevention Women's Group (Weeks 1-16)		Family Education Group (Weeks 1-12)		Relapse Prevention Women's Group (Weeks 1-16)
3:00PM – 4:00PM					
3:30PM – 5:00PM	Relapse Prevention Men's Group (Weeks 1-16)		Social Skills (Begins week 13, then ongoing)		Relapse Prevention Men's Group (Weeks 1-16)

Adaptations to Model

- Gender based relapse prevention
- Optional components to meet individualized needs for 9 hours.

Optional Services

- AA/NA attendance
- Case Management
- Intensive Home Based Services
- Sponsorship
- Parenting Classes
- Freedom From DV Classes (H.H or E.R)
- Life Skills (NM Works)
- GED or Basic Educ. (WNMU)
- Mentoring (Volunteer Center)

SAMHSA vs. HRSA

	SAMHSA	HRSA
Fiscal Agent	GRMC (BAMHS as subcontractor)	BAMHS
Eligibility Criteria	Meth Diagnosis	Non-Meth Diagnosis
Clinical Staff	4 FTEs	2 FTEs
Location of Services	All 4 counties	Luna and Grant Counties
Supportive Services	Case mgmt, Child care, Hermanas	Must refer clients for CM and Child Care

SAMHSA vs. HRSA

	SAMHSA	HRSA
Client Records	Anasazi	Anasazi
Evaluation	Anasazi Records & GPRA	Anasazi Records
Reporting	Submitted by GRMC	Submitted by BAMHS
Program Contact For Grant	James Marshall	Al Sircy

Timelines

	Activity	Person
Sept	Secure Contracts	James
Sept	Hire Staff	A1
Sept	Implementation team meets weekly	
Sept	Contact Evaluator	Susan
Sept	Program Outreach for Referrals	
Sept	Facility	